

# CLUB FOR ALL SEASONS



Mr. Tom Booth, long serving first team scorer, keeps a close check on the state of play. — (1308/5).



MEMBERS enjoy a drink in the social room, decorated by team photographs illustrating the club's history. The open door leads into the original bar, dating from the early 1960s, which was the first part of the present clubhouse complex to be built. — (0608/2/3).

Pictures:  
Jim Tampion  
Words:  
Belinda Mellor



TEA ladies, Mrs. Mandy Pearson and Mrs. J. Blakeley prepare refreshments in the clubhouse kitchen. — (1308/6).

## 1983 Cricket and soccer brought together by old building bricks

MEMBERS and supporters of East Ardsley United Cricket Club, who began work on the present clubhouse by building the bar about 20 years ago, using recycled bricks from demolished houses, are now looking forward to completing the facilities at their Jeffrey Field ground with the addition of a sports hall.

Since the bar was first built in the early 1960s, the officials and clubmen — doing most of the labouring and fitting out themselves — have also put up a social room and a spacious kitchen.

Their most recent project has been the two-storey section known as the Centenary Pavilion. Here, the first floor changing rooms, which open onto a balcony overlooking the field, are about to be equipped with showers, and there are plans to turn one of the ground floor store rooms into a players' tea room.

The other ground floor room houses the groundsman's equipment, and the outside wall on this side of the building has been left with a breeze block facade, without a covering of bricks, ready for the construction of the planned sports hall, with facilities for indoor cricket nets and other activities, such as five-a-side soccer.

Explaining how the schemes first got underway, club secretary Mr. R. Pearson said the impetus came from a special general meeting called at the village Working Men's Club in January or February, 1961.

Although funds were running low, officials and members — who for many years had used the nearby Bay Horse public house as their headquarters — resolved to build their first bar at Jeffrey Field.

A local builder offered them the materials from old houses which were due

for demolition in Pit Lane, East Ardsley as long as they did the clearance work themselves.

So the cricket club stalwarts went down to the site, pulled down the old dwellings, cleaned off the bricks and built a bar room and cellar alongside the now demolished wooden structures which housed the tea rooms and kitchen.

This original bar room is still part of the clubhouse today, and the money it generated helped fund the 1963/64 extension, which now houses the social room and kitchen.

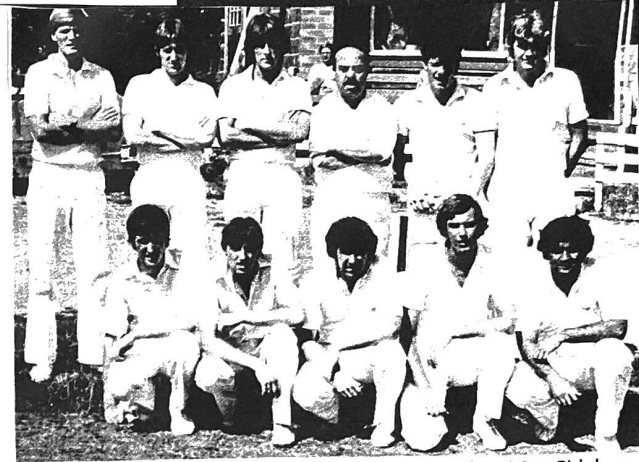
The next step was to improve the changing facilities. The old wooden changing rooms, which stood on the corner side of the field, had deteriorated to a poor state of repair, so the mid-1960s saw the club buy a seaside chalet showhouse which was positioned alongside the clubhouse.

This served its purpose until the last major development came about ten years later, with the drawing up plans for the two-storey extension, which was structurally completed two years ago, after three years of construction work from the foundations upwards.

For one season, after the ground floor walls had been built and the chalet had been pulled down, the players changed in the two downstairs rooms, with a tarpaulin across the floorboards of the storey above.

Now East Ardsley's scoreboard, which Mr. Pearson said dates from around 1950, is the oldest structure still standing on the ground.

East Ardsley United Cricket Club recorded its centenary in 1978, when an anniversary match featuring guest players was arranged



THE East Ardsley first team, pictured above from the left is: (back row) Gary Blakeley, Michael Pearson, Stephen Knighton, Colin Jagger, Richard Lamming, Paul Jennings; (front row): Ian Dews, Paul Pearson, John Grindle, Andy Wood, Reis-ur-Rehman. — (1308/4).

BELOW: East Ardsley second team line-up, from the left is: (back row) Richard Knowles, Richard Nicholls, Mark Heald, Mark Stephenson, Neil Scargill, David Pearson; (front row) Nigel Smith, David Baines, David Wood, Stephen Finnerty, John Kevan. — (0608/3/3).

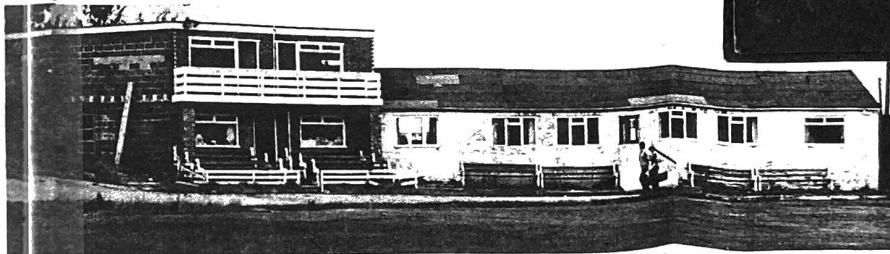


EAST Ardsley's trophy shelf (above) displays an impressive array of silverware. On the far left is the Victory Cup, won by the first eleven when they took the Central Yorkshire Cricket League second division championship last season.

Next is the Clay Trophy, won by the second team for the highest total of league points in the last six matches of 1982.

Next stands the Bradley Trophy, which East Ardsley shared with Morley for the most first team points in the last six matches of 1982.

On the right stands a six-sided soccer trophy which the football section has won for the second year in succession. — (0608/3/4).



THE view across the cricket pitch shows various stages in the development of the East Ardsley clubhouse. The window on the far right of the single storey building belongs to the original bar room, built of recycled bricks, which began the current development in the early 1960s. The rest of the single storey section, added in the mid-1960s, houses the social room and kitchen. The two-storey pavilion, with the first floor changing rooms and balcony, is the most recent section. The wall on the extreme left stands faced with breeze blocks, ready for the addition of the planned sports hall. — (0608/3/1).